

Camps Courtney and McTureous Newsletter



July

2012



On Friday 22 June, Marines from Camp Courtney ventured to Hamahiga Island off the eastern coast of Okinawa to help clean a memorial dedicated to Col Kermit H. Shelly, the former Commanding Officer of 3rd Force Service Support Regiment, now known as 3d Marine Logistics Group. Col Shelly left an indelible mark on the island, dedicating countless amounts of time and resources to developing the island after the war and providing services to its people. After his death in 1968, residents there dedicated a memorial in his honor, placing it next to a memorial to the victims of the war.

Saturday 23 June was Irei-No-hi or Memorial Day in Okinawa, commemorating the end of the war here. Each year, the residents of Hamahiga Island gather to pay their respects at both memorials. The Marines who cleaned the site on the day prior arrived again on Saturday to take part in the ceremony. As part of the Okinawan tradition, the attendees placed incense on the memorials and covered them with symbols of “earthly things,” including fruits, pastries, flowers, and even Budweiser. After the community clock chimed noon, everyone stepped forward and bowed in observance of the holiday and local leaders spoke about the meaning of the day, bringing an end to an important annual community relations event.

LCpl Timothy Blazek, a Marine volunteer from Camp Courtney, was impressed with the event and reflected on the positive interaction between Col Shelly and the residents of the island. “He was an example of how all of us stationed here on Okinawa can have a friendly and lasting relationship with our local neighbors,” he said.

Community relations events like this are frequent occurrences on Camp Courtney, thanks to Mr. Ichiro Umehara, the Camp Courtney Community Relations Specialist. For more information about upcoming events, contact ichiro.umehara.ja@usmc.mil or CampCourtneyCampOperations@usmc.mil. Participation from both military and family members is always welcome!



Camp Operations Officer's Message

Both the Camp Commander and Camp Director are off-island at the moment, so I'll say a few words in their place.

Summer PCS season has arrived, which means there will be many new faces around Camps Courtney and McTureous. Please do your best to help integrate these new members of our community. Show them where to find the newsletter, how to contact Camp Operations for all Camp comments and concerns, and help them get prepared for their first typhoon. Bring them out to Camp events at the clubs, bring them to the next Town Hall meeting in August, and help to familiarize them with all the great services provided on Courtney- from a hometown-feeling Commissary to local banks and credit unions that know you by name.

The small-town spirit on Camp Courtney is what makes it unique. Help us carry on that feeling to new arrivals.

Additionally, be a good neighbor and keep an eye on your neighbor's houses while they are away for a summer vacation or TAD. This becomes especially important during inclement weather and typhoons. If you think there might be damage to a home in your neighborhood, call Housing Maintenance at 634-HOME.

The Camp will soon be distributing magnets that provide important phone numbers and units as part of our effort to continually increase Camp outreach. Look for one on your door in the coming weeks and be sure to post it on your fridge!

Finally, as new families move in to Courtney, I will be leaving Courtney for a new assignment on Camp Hansen in the coming weeks. Thanks for your support over the past few months.

In other news...

- Bechtel is now hiring Substitute Teachers. Please contact Michele at 622-7650 or email Michele.oconnell@pac.dodea.edu for more information.
- Correction: The previous newsletter stated that you should call Courtney Ironworks if the lights at the field behind Bechtel are left on. M CCS does not control that field. Contact Bechtel at 622-7650 or Camp Operations after hours at 622-6909. However, Bechtel has placed a new lock on the light box, so this should no longer be an issue. Thanks for your understanding.
- Thanks for your patience with paving on Camp Courtney. The next phase of paving will begin later this summer.
- Bush Dental Clinic is open 0700-1600 Monday through Friday. Also be aware that the Dental Clinic follows USMC holidays, since it falls under the MLG, while the rest of the clinic follows USN holidays and special liberty days.

OUR OKINAWA NEIGHBORS

Ichi Umehara
Community
Relations
Specialist

What's new around Camp Courtney?

Here comes Summer!

Summer festivals!

Events in July

14 July – Expo Park Summer Festival (1200-) - 1,000 Fireworks (Fireworks start at 2000)

14 July- Itoman Festival (1700-end) at Nishizaki Athletic Park in Itoman City

14-15 July- Sea-port Chatan Carnival at Sunset Beach (1000-end, fireworks at 2000)

20-22 July- Urasoe Tedako Festival (0900- fireworks at 2100 except on 20July, starts at 1700)

21-22 July- Motobu festival at Motobu Tanch Park and (Toguchi port as sub-site)

21-22 July- Unna Festival at Onna Village Community Park

28-29 July- Nago Summer Festival at Nago port on HWY 58

22 July at 1800, “AKB48”, the most popular Japanese idol girls group, performs at Toyosaki Chura SUN beach. (Ticket will be on sale on 12 July - 4800yen)

Have you ever been to the down south? Vol. 2- AQUA WORLD at Toyosaki Chura SUN beach

One of the biggest Beach side park open on 20JUL

Toyosaki Chura SUN beach is one of the largest brand new beaches, which is located near Okinawa Outlet Mall “ASIBINAA”

Direction: If you drive south on HWY 331 after you pass Naha Airport, make a right on the bridge to Okinawa Outlet Mall “ASIBINAA” for Itoman.

Toyosaki Chura SUN beach is seaside from the shopping mall.

Till 31Aug, they are open from 1030-1900 everyday.

Water Ground Athletic (Water slide) 700yen/1-hour

Water balloon 400yen/5-min and many other attractions.

(No restriction of Tattoos)





ROCKY POINT
Lighthouse



**2012 Courtney Chapel
Vacation Bible School**



July 26-27 - 0900 to 1300

Registration Begins at 0830

Lunch will be provided!

For more info contact

Courtney Chapel

622-9350





Bayview E 'Club 622-9300
4th of July Celebration
Friday, July 6th
Social Hour Hot dogs & Hamburgers 5-7pm

Hashmarks 622-9583
4th of July Celebration
Friday, July 6th
Social Hour Hot dogs & Hamburgers 5-7pm

Legend's O'Club 622-9583
Red, White, & Blue Celebration Steak Night
Friday, July 6, 5pm-7pm
with complimentary hors d'oeuvres
Open to Officers, SNCO's & Civilians Equivalent




Legends O' Club 622-9541
Red, White, & Blue Celebration DJ Night
Friday, July 6, 7pm-11pm
Wear your best Patriotic Outfit
Open to Officers, SNCOs, and Civilian Equivalent

Hashmarks SNCO Club 622-9583
Karaoke Nights
Saturday, July 7 & 21, 7pm-11pm

***DJ Night* Fridays, 9pm-1am**

Bayview E' Club 622-9300
DJ Nights
Friday & Saturday Nights 9pm-2am

Karaoke Night
July 25, 8pm-11pm

Marine & Family

Personal Services Center 622-7332
Career Assessment, 02 July, 0900-1200
Basic Japanese Language Class Part I, 02, 09, 16, 23 July, 1200-1330
Sponsorship Training, 03 July, 0900-1100
Resume Writing Workshop, 05 July, 1300-1600
EFMP - Exceptionally Sunny Summer Camp Series, 09-13 July, 1430-1530 @ Bechtel Elementary
Build a Better Budget, 11 July, 1130-1300
Money Management Workshop, 18 July, 0800-1100
Federal Government Employment Process Workshop, 23 July, 0900-1200
Credit Report and Credit Score Analysis, 25 July, 1130-1300
Social Network Your Way to a Job, 25 July, 1300-1600
Washi Paper Pen Holder, 26 July, 0900-1100
Ace the Interview Workshop, 26 July, 1300-1600
CEC - Professional Writing and Email Etiquette, 27 July, 1000-1130

Library 622-9280
***Adult Board Game Nights**, July 3 & 17, 5pm-7pm
***Adult Movie Night**, July 24, 5pm-7pm (movie to be announced)
***Pre-school Story time**, Thursdays, 11am-1130am (3- 5yrs old)
***School Age Story time**, Thursdays, 1pm-2pm, (6-11yrs old)
***Tween Event, Feed Your Mind- Food Trivia**, July 5th & 10th, 4pm-5pm
***Teen Events, Reading Is Delicious**, July 12th & 26th, 4pm-5pm
***Family "Snuggle Up" Story time**, July 27, 6pm-7pm

Youth & Teen Center 622-9702/9711
BBQ Torii Beach (Field Trip), Youth-July 2-1pm-5pm, Teen-July 16-12pm-6pm
Youth & Teen Hip Hop Class, July 3, 3pm-4pm
Youth Yoga, July 17, 3pm-4pm
Youth Comprehensive Water Park, July 20, 12pm-6pm
American Village Cinemas, Youth-July 23, Teen-July 17 & 30, 1pm-6pm
Forest Adventure, Youth-July 25, Teen-July 19, 12pm-5pm
Community Beach Clean-up, Youth-July 26-3pm-4pm, Teen-July 25-1pm-2pm
Teen Courtney Pool Visit, July 11 & 26, 1pm-3pm
Youth & Teen Celebrate July Birthdays Bash, July 31 2pm-3pm

Sports & Recreation

Ironworks 622-9221
Open Ultimate Frisbee
July 20-22, Register at any MCCS Athletic Facility by 1pm-July 16 Entry Fee-\$80/team, Open island-wide. Awards Presentation.
Open 6-on-6 Soccer Tournament
July 27-29, Courtney Bowl Field, Register at any MCCS Athletic Facility by 1pm-July 23, Entry Fee-\$80/team. Open island-wide. Awards Presentation.

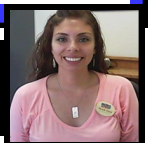
Semper Fit Aquatics 645-3180
4th of July Splash Bash
Wed, July 4, 1-4pm, FREE, BBQ, music, fun activities and games, McT & Courtney pools
Learn to Swim Program
Session 2: July 2-July 13, Online Registration available
For more info visit www.mccsokinawa.com/summerlts

Bowling Center 622-7365
Lunch time Special
11am-1pm, Bowl a strike on a Red Pin and win a Free game
Independence Day Special
July 4, \$1.75/game
****4th of July** 9 Pin No Tap Tournament***
July 18, sign up at 6pm, \$20-fee, tournament starts at 630pm
Glow Bowling
Fridays, 6pm-0200
Saturdays, 11am-0200

Taiyo Golf Club 622-2004
Summer Junior Golf Clinics
July 10-13, July 24-27 & August 14-17 Ages 5-9: 8-10am, Ages 10-17: 1-3pm
Call to register
Family Night at the Driving Range
Wednesday Evenings, 5-9pm
Families get free range balls all night and instruction from Head Professional from 5-7pm



Camp Courtney & McT CSC Office
Community Services Coordinator, Felix Seraphin



Administrative Specialist,
Michelle DeLeon

As you explore Okinawa this summer, please remember that any contributions made to rid our environment of litter are all significant. The positive impacts on the environment from living sustainably are not always apparent; therefore it can become easy to lose motivation to go the extra mile. Witnessing exactly how much of an impact we can have, however, reminds us not only that environmental stewardship is responsible but that we all share the success of having a clean environment.

This summer, as you enjoy the bounty of Okinawa's wilderness, I challenge you to pick up a few pieces of litter to take home and dispose of. By doing this, you will begin to see how much of an impact you are having. A few small pieces or even a whole bag may seem insignificant, but the seed you plant in yourself by doing so, and possibly in others who see you, will surely grow to make more of a difference than you may ever see. Watch and you might find yourself picking up more as you go to the beaches or feel more driven to live sustainably in other ways.

To have a better understanding of how much litter is in our oceans, search the internet for the Great Pacific Garbage Patch. Whether you pick up one piece of litter or one bag full, you *are* making a difference towards fixing this issue.

The planet is yours.

Camp Courtney/Hansen Environmental

Courtney Office: 622-7078

Hansen Office: 623-7223/623-4634

**WORSHIP
WITH US
AT THE CHAPEL**



Camp Courtney

Bldg 4224

8:00 am Catholic

11:00 am Protestant

Camp McTureous

Bldg 5239

9:30 am Protestant

Call 622-9350 for more information on all services.

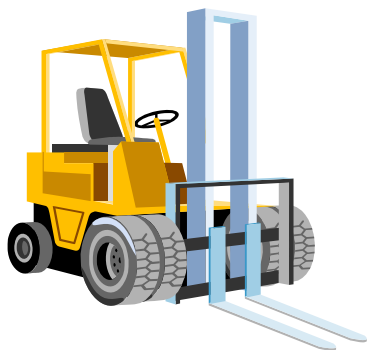
facebook.com/campcourtneychapel



ATTENTION COMMISSARY PATRONS:



**A "Store Reset" is scheduled for
Monday & Tuesday, 16 & 17 July.
We will be open the following
Wednesday, 18 July.**



**Please Shop
"Your"
Courtney
Commissary!**



1



KADENA AIR BASE

FREE AND REDUCED LUNCH PROGRAM

The USDA National School Lunch Program is available to ALL students on Okinawa who qualify and are attending DoDEA Schools

Applications for school year 2012/2013 will be accepted starting 1 July 2012

Note: Re-application is required annually

New eligibility guidelines will take effect on 1 July 2012 and can be found at
www.fns.usda.gov

For applications and submissions, please contact:

18 Mission Support Group, Bldg. 99, Kadena AB
School Liaison Office
(Behind Dunkin Donuts)

DSN: 632-5932/5934

Comm: 098-962-5932/5934

Email: 18msg.kadenalunchprogram@us.af.mil

BECHTEL ELEMENTARY SCHOOL



Student School Supply List

SY 12-13

PSCD/SURE START/K - 5



We are looking forward to having your child come to the "BEST" School. Students are to bring the following supplies for school. Individual teachers may request additional items not included on this list. Many of the supplies must be periodically replaced throughout the school year. Parents are also encouraged to have a set of supplies at home for students to use. A pair of scissors, pencils, crayons, and glue are the basic items needed for home projects. Please mark all personal items (coats, jackets, backpacks, and lunch boxes) with the child's name.

PSCD

1	bottle of Elmer's white glue	1	** change of clothes
10	glue sticks	1	** back pack

SURE START

1	bottle of Elmer's white Glue	2	boxes Crayola Crayons
2	packs glue sticks	1	pack large primary pencils / 1 pack #2 Pencils
1	Towel or small blanket	1	** Large size backpack
1	box of colored washable markers	1	** shirt/pants/underwear/socks
1	box of colored pencils		LABELED (in a large Ziploc bag)
1	pair school scissors (Fiskars brand if available)		

☺ Supplies may be brought to the parent orientation or will be picked up at the home visit.

KINDERGARTEN

1	bottle of Elmer's white glue	2	packs of large primary pencils
8	glue sticks	1	pair school scissors (Fiskars brand if available)
1	Large backpack (not rolling style)	2	large erasers
1	pack of #2 pencils	2	plastic pocket folders - no prongs
1	box of colored pencils	1	Pair of Gym Shoes
1	box of colored washable markers	1	** towel for rest time (no blankets, pillows, or mats) labeled
2	boxes of Crayola Crayons	1	** 12 oz water bottle with sport top
1	set watercolor paints with brush	1	** shirt/pants/underwear/socks
			LABELED (in a large Ziploc bag)

☺ Supplies may be brought to the parent orientation or will be picked up at the home visit.

1ST GRADE

10	glue sticks	5	erasers
3	primary composition notebooks	3	Paper pronged folders, all one color if possible
2	boxes of Crayola Crayons (24 count)	2	plastic pronged folders, all one color if possible
1	packs of #2 pencils (sharpened preferred)	2	plastic pronged folders
		1	Pair of Gym Shoes

2ND GRADE

1	bottle of Elmer's white glue	4	white erasers
4	glue sticks	1	pair of scissors (rounded)
1	packages of #2 pencils	4	plastic pocket folders NO PRONGS
1	box of colored pencils	3	composition books (wide ruled)
2	boxes of Crayola Crayons	1	Pair of Gym Shoes

3RD GRADE

1	bottle of Elmer's white glue	4	large erasers
2	glue sticks	1	pair of scissors (Fiskars brand if available)
1	box Crayola Crayons (24 count)	1	plastic pocket folder
1	box colored pencils	6	folders (with pockets and metal prongs)
3	packages of #2 pencils	2	packs wide-ruled loose leaf paper
1	Pair of Gym Shoes	4	composition books (wide ruled)

4TH GRADE

2	sticks of glue	1	rubber eraser
1	package of highlighters	5	pocket folders
1	pack of red and black ink pens	2	packs of loose leaf paper (wide ruled)
1	box of colored pencils	5	composition books (wide ruled)
1	box of colored washable markers	1	pair of gym shoes
1	box of Crayola Crayons	1	** book bag or back pack
1	plastic supply box		

☺ PLEASE-NO TRAPPER KEEPERS

5TH GRADE

1	bottle of Elmer's glue or glue sticks	1	plastic supply box
1	set of 7 tabbed notebook dividers	3	packages of loose leaf paper (wide ruled)
1	package of highlighters	3	composition books (wide ruled)
1	box of colored pencils	1	package of red and blue pens
1	box of colored washable markers	1	dry erase markers
2	packages of #2 pencils	1	sturdy three-ring binder-1"-2" zipper binder recommended
4	pocket folders	1	rubber eraser
1	pair of gym shoes	1	** book bag or back pack

☺ PLEASE - NO TRAPPER KEEPERS

*Common items will be collected and kept in each homeroom. Replenish as necessary.

** Items are highly recommended for your student.

USEFUL PHONE NUMBERS

<p>EMERGENCY AMBULANCE/FIRE: 911 (IF USING CELL PHONE: 098-911-1911)</p> <p>CAMP DUTY OFFICER 622-9609 Provost Marshall (PMO) 622-9608/9690</p> <p>Banks Community Bank 622-9442/9324 Mon - Thursday 9 am - 3 pm Fri/Mil Payday 9 am - 5 pm</p> <p>Navy Fed. Credit Union 622-6832 MON - FRI 9 am - 4:30 pm Mil-Payday 9 am - 5 pm</p> <p>Delivery - Food Anthony's Pizza 622-6333 Daily 6 pm - 10 pm</p> <p>Clubs & Restaurants Bayview E Club 622-9300/2445 Dining Open Wed - Thurs 1700-2100 Sun 1700-2100 Lounge Open Wed-Thurs 1700-230 Fri-Sat 1700-0230 Sun 1700-2300</p> <p>SNCO Club 622-9583 Bar Closed Sun & Mon Mon-Thurs 1000-2300 Fri 1000-0200 Sat 1000-0100 Sun 1000-2200</p> <p>Tengan 622-9413 Mon-Fri 11 am - 2 pm Mon-Fri 5 pm - 9 pm Sat 5 pm - 9 pm Sun 9 am - 2 pm</p> <p>Legends 622-9541 Fri 4:30 pm - 1200am</p> <p>Fast Food Food Court - PX 622-6332 Baskin Robbins 10 am - 7:30 pm Subway 10:30 am - 7:30 pm Anthony's Pizza 10 am - 7 pm</p> <p>Food Court - Courtney 622-6333 Burger King Mon-Fri 6 am - 7:30 pm Sat, Sun 6:30 am - 8 pm Anthony's Pizza 10:30 am - 10 pm Taco Bell 11 am - 7 pm</p> <p>Recreation Arts & Crafts Center 622-7492 Wed, Thur, Fri 11 am - 8 pm Sat, Sun 9 am - 6 pm</p> <p>Bowling Center 622-7365/7367/7364 Sun- Thurs 1100-0000 Fri-Sat 1100-0200 Holiday 1100-0200</p> <p>Courtney Fitness Center 622-9221/9741 Mon-Fri 5 am - 10 pm Sat, Sun & Hol 7:00 am - 10 pm</p> <p>Teen Center (Courtney) 622-9702/9711 Youth Mon-Fri 1500-1700 Sat 1200-1600 Sun/Hol Closed Half Day/No School 1200-1700 Teen Mon-Fri 1700-1900 Sat 1700-2200 Sun/Hol Closed Half Day/ No School 1700-1900</p>	<p>School Age Care 622-9049/9051 Mon , Wed, Fri 0500-1800 Tues & Thurs 0600-1800 Sat-Sun Closed</p> <p>Commissary 622-7590/7543 Mon CLOSED Tues - Fri 10 am - 7 pm Sat - Sun 10 am - 6 pm Early bird (Daily) 9 am - 10 am</p> <p>Main Exchange 622-6101 Mon - Sat 10 am - 7 pm Sun 10 am - 6 pm</p> <p>Shoppette Courtney 622-6613 Daily 9 am - 10 pm McTureous 622-6403</p> <p>Bush Family Practice 622-7632 Dental 622-7539 DIV BAS 622-7309</p> <p>Chapel (Courtney) 622-9350/9360</p> <p>Child Development Center 622-7751/7631 Mon, Wed, Fri 5 am - 6 pm Tues, Thurs 6 am - 6pm</p> <p>Courtney Lodge 622-9578 Mon-Fri 0800-1700 Sat-Sun & Hol 0800-1700</p> <p>Library 622-9280/9899 Mon-Sun 1000-1900</p> <p>Education Center 622-9694 Mon - Fri 7:30 am - 4:30 pm</p> <p>MCCS Community Services Coordinator 622-7381/7383 Mon - Fri 7:30 am - 4:30 pm</p> <p>Omega Travel 622-5411 Mon - Fri 8 am - 4 pm</p> <p>Outdoor Recreation 622-7297 Mon-Fri 0500-2200 Sat, Sun & Hol 0700-2200</p> <p>Personal Service Center 622-7332/9754 Mon - Fri 7:30 am - 4:30 pm</p> <p>Post Office 622-9687</p> <p>Personal Pick-Up Mon-Fri 8 am - 5:30 pm Sat. 8 am - 3:30 pm</p> <p>Rental Pick-up Mon-Fri 10am-5 am Sun. 10 am- 3 pm</p> <p>Service Station 622-6131 Mon - Thurs 10 am - 7 pm Fri, Sat 10 am - 6 pm Sun 10 am - 4pm</p> <p>Typhoon Motors 622-9546 Mon-Fri 0900-1900 Sat, Sun & Hol 0900-1730</p> <p>Exchange New Car Sales 622-1234</p> <p>Tsunami Scuba 622-9795 Mon & Fri 11 am - 6 pm Sat, Sun 8 am - 6 pm Tues/Thurs CLOSED</p> <p>Courtney Pool 622-9662</p> <p>McT Pool 622-7397</p>	<p>ACE Insurance Mon - Fri 622-6308 10am-5pm</p> <p>Mediatti Broad Band Communication 622-6669 From On Base Dial 99-098-959-2907 Tues & Thurs 830am-430pm</p> <p>Barber Shop 622-6310</p> <p>Beauty Salon 622-6535</p> <p>Bechtel Elem. 622-7504</p> <p>Billeting Office 622-9617</p> <p>Eaglette Hardware 622-5003</p> <p>Environmental Office 622-7350 623-7223/4634 623-4495</p> <p>Family Housing Maintenance (24 hrs) 634-4663</p> <p>Family Housing Office 622-7207/7317</p> <p>Entomology Air Force Marine Bases 634-1961 645-7188</p> <p>SATO 622-6118</p> <p>Telephone Customer Service 622-7211/7479</p> <p>Konnect Camp Courtney: 622-6579 Tues and Fridays Only 1000-1330 1430-1700</p> <p>Camp Foster (Main Branch): 645-1730 Billing/Customer service: Option 1 Help desk: Option 2 Mon - Sat 1000-1800</p> <p>WICO 645-WICO (9426) 622-9424</p> <p>Camp Operations Deputy Camp Commander 622- 7145 Camp Operations Officer-in-Charge 622-7146 Camp Operations Chief 622-7623 Administration Chief 622-9596</p> <p>NOTE: If your number is incorrect or is not listed, give us a call at 622-9596 or send an email to CampCourtneyCampOperations@usmc.mil.</p> <p>TO DIAL CAMP COURTNEY NUMBERS FROM A CELLULAR PHONE: Dial 098-954-XXXX (party's 4-digit extension)</p> <p>Thank you, Camp Courtney Operations</p>
---	--	--