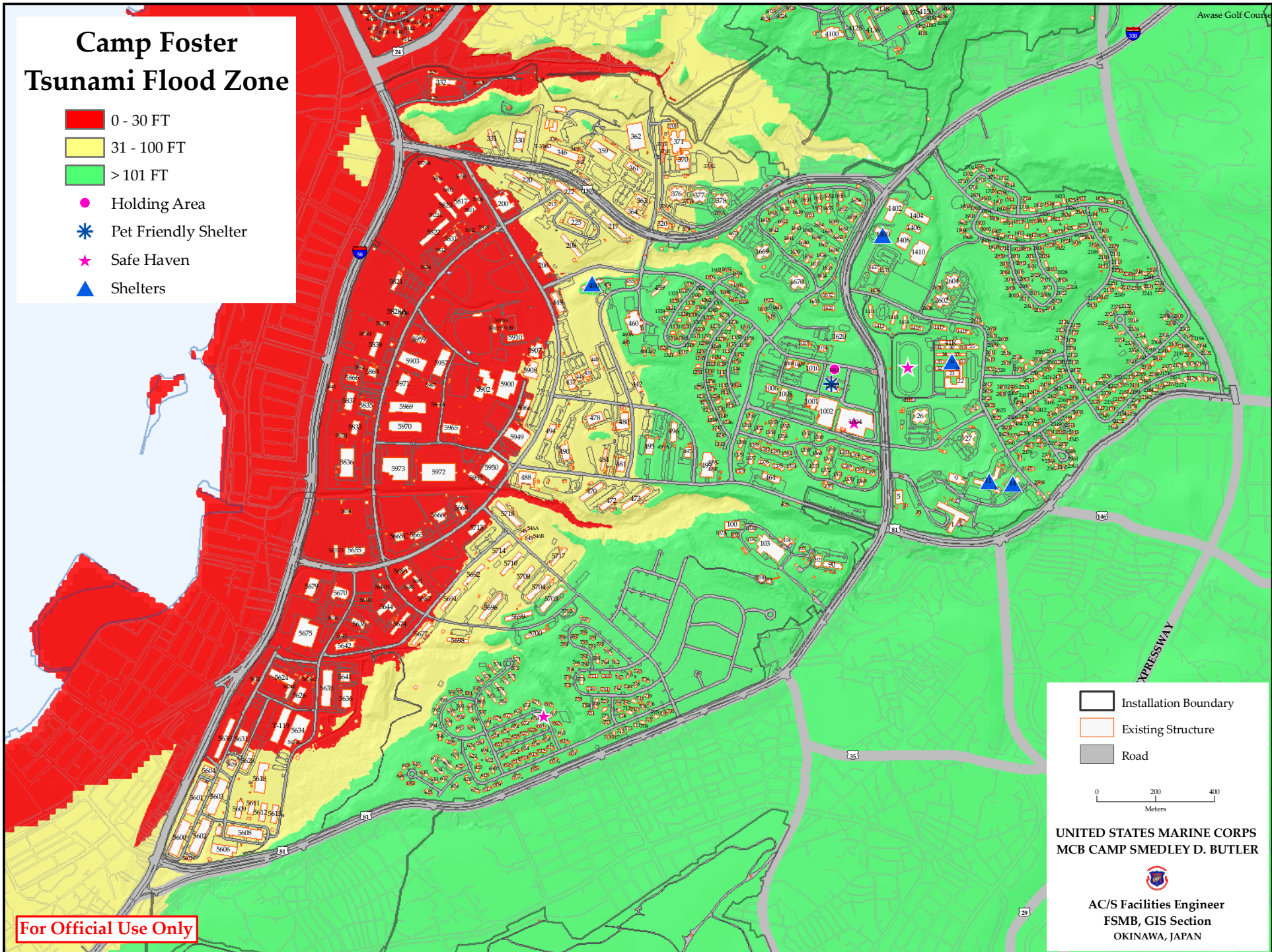


# Camp Foster Tsunami Flood Zone

- 0 - 30 FT
- 31 - 100 FT
- > 101 FT
- Holding Area
- Pet Friendly Shelter
- Safe Haven
- Shelters



For Official Use Only

- Installation Boundary
- Existing Structure
- Road

0 200 400  
Meters

UNITED STATES MARINE CORPS  
MCB CAMP SMEDLEY D. BUTLER



AC/S Facilities Engineer  
FSMB, GIS Section  
OKINAWA, JAPAN