

WELCOME TO CAMP MUJUK





Welcome to Camp Mujuk, Pohang, Republic of Korea,

In 1950 Pohang was a tiny fishing village, but it had great strategic importance because it included a significant stretch of the Eighth Army main supply route (National Route 29), housed several key road junctions, included the only protected port on the east coast still in UN hands, and was the site of [K-3](#) one of the few modern airfields in eastern Korea.

When the Chinese launched their 3rd Phase Campaign on 31 December 1950, the North Korean 10th Division, with about 6,000 light infantry troops with heavy mortars and some heavy machine guns headed to Pohang.

On 9 January 1950, 1st Marine Division was ordered to defend an east-west line just north of the Andong-Yongdok Road and to simultaneously protect the north-south-running Eighth Army main supply route (Pohang).

By 11 February 1951 the North Korean 10th Division troops retreated back North with less than 1,000 of their personnel remaining. General Smith and his Marines moved up to Chungju for another fight and the 1st MAW supported the fight from Pohangs K3 Airfield for the remainder of the war and then some. The fighter pilots that flew out of Pohang included LtGen Frank Petersen, Sen John Glenn, and baseball legend Ted Williams.

The first Marines arrived in Pohang on 10 January 1951 and we have been here in one form or another ever since. This is our hometown and a great place to fight the next war from. It is the U.S. Marine Corps Westernmost fighting position and located in a town which has more USMC memorials than San Diego. Today Pohang still has significant strategic importance as some of the most modern infrastructure in the world allows this city to be the gateway to one of the strongest and fastest growing economies in the world.

The friendly community that appreciates the USMC role in its freedom, modern infrastructure, and availability of multi seasonal recreation activities make the quality of life available in Korea better than any other overseas duty. It is up the Marines here today to continue that legacy and the spirit of community developed by those who went before us.

**Colonel Ronnie D. Michael
Commanding Officer**



Camp Mujuk (Korean meaning “Invincible”)

The information below is meant to serve as a basic introduction to your assignment at Camp Mujuk, Republic of Korea (ROK); the only Marine Corps Installation on the Korean Peninsula. We are the tip of the spear, ready to support all Marines, Sailors, Soldiers, Airmen and foreign military members who come here for training, exercises, and combat. The Camp and its Marines support bi-lateral training between our host country and other branches of service. All inbound personnel will be assigned a sponsor to aide in their transition to Korea. Stay in contact with your sponsor regularly with updates on your status and be sure to ask questions as they arise. Constant communication is critical to making your transition go as smoothly as possible. Our goal is to make this move as painless and easy on you as possible, so “help us help you”.

We look forward to your safe arrival to Camp Mujuk.

In addition to information and pictures that can be found on our command’s Marines.mil website, below is some additional information that will help your transition into the ROK and check into the command.

Outline/Table of Contents:

- First Things First – Arrival to the ROK
- Staff Sections
 - o S-1
 - o Security Manager
 - o S-3
 - o BEQ/BOQ Manager
 - o S-4
 - o S-6
 - o Medical
 - o Security Forces
 - o Mess Hall
 - o Amenities
- Helpful Hints
 - o Helpful Phone Numbers
 - o Helpful Websites
- Consolidated Checklist
- Recommended Packing List
- Billeting pictures, layout
- Maps of US Military Installations on Korean peninsula

Arrival to the ROK:

COMMAIR → Incheon Int'l Airport // MILAIR → Osan Air Base

- Whether you arrive via COMMAIR or MILAIR, your section staff will transport you from the airport to Camp Mujuk as long as they know when you are arriving in Korea.
- Upon arrival to Camp Mujuk, your check-in process will begin at the Camp Mujuk S-1.
- Ensure you bring your GTCC (you should be issued one prior to checking out of your current unit, Accession Pipeline Marines will apply for a GTCC upon arrival to Camp Mujuk), copies of your original orders, flight itineraries, travel receipts, and any and all pertinent documentation from your PCS to Camp Mujuk (i.e. checkout sheet, lost gear statements, awards, custody agreements, etc.).

S1

- Please provide a copy of your itinerary to your sponsor as far enough in advance so it can be given to the S-1 and S-4 for proper coordination purposes.
- Ensure you bring your Medical & Dental records, Government Travel Charge Card, ID card, Valid Stateside Driver's License, and all other Military Licenses.
 - For SNCOs & Officers, it is HIGHLY recommended you get an International Driver's License (which can be used for TAD trips). Application form can be found at the following link: <http://www.aaa.com/vacation/idpf.html>.
 - Ensure your driver's license will not expire while you are in Korea. Renew if necessary prior to arriving in Korea, as not all states have an auto-extend policy.
 - Ensure you have an active GOVCC prior to coming to Korea.
- Ensure you maintain ALL travel receipts from when you departed the United States (or your last command) to arriving at Camp Mujuk.
- You will need to complete the following training on the TRAX website (<https://www.defensetravel.dod.mil/site/trax.cfm>) and provide a certificate of completion for several classes upon check-in to the S-1:
 - www.defensetravel.dod.mil/Passport
 - Defense Travel Documents (DTS 101)
 - About DTS
 - Programs & Policies - TDY Travel Policies 101
 - Programs & Policies - Travel Card Program (Travel Card 101)
- While stationed at Camp Mujuk, you will be in receipt of the following entitlements in addition to basic pay and allowances:
 - Hardship Duty Pay – this entitlement is authorized because Camp Mujuk is in a remote location (\$50/month)
 - OCONUS COLA – authorized to offset expenses associated with being stationed in a foreign country (the type of COLA you receive will be based off of your billet); you will either receive OCONUS COLA without dependents or OCONUS COLA Barracks (see Ch. 9, JTR)
 - Commuted Rations – authorized for Marines whose billet prevents them from eating in the chow hall at least 2 times per day (e.g. Military Police)

- Unit Mail Room.

Mailing Address:

Rank F-Name MI L-Name

Camp Mujuk Unit 15017 APO AP 96218-0173

Navy CPPA Support

- The servicing PSD for all Navy personnel in the ROK is PSD Yokosuka. For Navy personnel stationed at Camp Mujuk, CPPA support for PSD Yokosuka is provided by CNFK N-1.
- Navy Admin check-in and clearing of travel voucher must be done through CNFK N-1 unless organic CPPA support is available at Camp Mujuk.
- Camp Mujuk S-1 will provide contact information for CNFK N-1 if organic CPPA support is unavailable.
- Navy personnel residing in the BOQ will receive full OCONUS COLA for locality code KR999 at a "0" dependent rate. Navy personnel residing in the BEQ will receive OCONUS COLA for locality KR999 at a reduced "In the Barracks" rate.
- All Navy personnel will retain BAS and will be required to pay cash for meals at the Mess Hall.
- All Navy personnel will receive HDP-L of \$50 a month.
- All Navy personnel with dependents will receive FSH of \$250 a month.
- All Navy personnel with dependents left at former PDS, or moved to authorized location, will receive BAH/OHA for the location of dependents.
- If your pay is incorrect you must contact CNFK N-1 as soon as possible to rectify the matter.

Security Manager

- Those personnel who require a Secret clearance should have a current or final adjudicated Secret clearance prior to arrival in Korea. If not, please start the process with your current command prior to executing PCS orders.

S3

- Have copies of all your completion certificates for the following required training (courses can be found at <https://jko.jten.mil/>) ready upon arrival:
 - SERE 100.2 Level A SERE Education and Training in Support of the Code of Conduct (FOUO) (4 hours) [J3TA-US1329]
 - VCAT Republic of Korea (2 hours) [J3OP-US1207]
 - USFK Theater Specific Required Training (1 hour) [USFK-US171]
 - U.S. Forces Korea Driver Licensing Course (2 hrs) [USFK-US002]
 - U.S. Forces Korea Driver Licensing Exam (1 hr) [USFK-US002-B]
 - Cyber Security & PII (MarineNet)

All permanent personnel stationed aboard Camp Mujuk are exempt from Rifle/Pistol/Swim Qualifications. It is HIGHLY recommend your required training is current to avoid negatively impacting composite scores or when you are getting looked at for a promotion board.

- All Marines will be required to conduct a weigh-in upon arrival.
- You are highly encouraged to complete your resident PME prior to executing orders to Camp Mujuk.

BEQ/BOQ Manager

- E-6 & above reside in the BOQ in a single occupancy room.
- E-5 reside in the BEQ in a double occupancy room (by themselves, subject to room availability).
- E-4 & below share the double occupancy room in the BEQ.
- For all inbound permanent personnel, a room within the respective barracks will be identified and waiting for you upon your arrival as long as liaison and coordination with a sponsor has been made/travel itinerary has been provided. There is no need to call to make reservations in advance.

NOTE: All rooms in the BOQ have small kitchenettes, stoves, ovens, microwaves, refrigerators and a washer & dryer. All rooms in the BEQ have small kitchenettes with a two burner stove top, microwaves, refrigerators, and a washer & dryer. (Power on base is 110 w U.S.)

S4

- All Marines and Sailors reporting in will receive a full CIF Issue to the greatest extent possible.
- Marines are required to show stateside driver's license and Korean driver's license in order to operate the NTVs available at Camp Mujuk.
- All Camp Mujuk permanent personnel will take the Government Owned Vehicle Operator Korean licensing exam (<https://jko.jten.mil/>). Below are some links to the online class and exam. The USFK Safe Driving Guide can also be found on the command's Marines.mil website.
 - USFK Driving Class:
https://jkodirect.jten.mil/html/COI.xhtml?course_prefix=USFK&course_number=-US002
 - USFK Driving Test:
https://jkodirect.jten.mil/html/COI.xhtml?course_prefix=USFK&course_number=-US002-B

S6

- Please submit SAAR form(s) and the required training certificates through the sponsor to initiate MCEN account migration prior to your arrival. This process can begin no more than 30 days before your arrival.
- Work cell phones are issued to key personnel. Smartphones shall be issued to officers, SNCOs, and civilian employees. Before issuing any cell phone, a mobile device user agreement must be signed.
- Korean cell phones can be rented or purchased at the LG store aboard Camp Mujuk or on any other military installation. Estimated cost is \$300 for a smart phone and \$65 a month for service.
- Internet access for your BOQ/BEQ room can also be purchased through Boingo or the LG store aboard Camp Mujuk. It is recommended you purchase a router in the local area, as interoperability with a U.S.-manufactured router cannot be guaranteed. Prices vary depending on the internet speed you desire, but are estimated to be between \$55 and \$80 per month.

Medical

- An Overseas Screening checklist is mandatory. Ensure you inform your S-1 and medical section you are transferring to Korea to ensure you have the correct medical screening completed prior to arrival. You should arrive an all up round.
- **The nearest MTF and Dental are roughly two hours away. Personnel with orders should not be cleared to check in if they have ongoing medical needs, or are a Class 3 or 4 dental.**
- Ensure all shots required for Korea are complete before arriving (especially Smallpox).

- Bring any special medications with prescriptions. Ensure they are kept within their original issuing container in order to avoid any problems when going through customs. If there is a special medication required for your condition (outside the norm), you should contact Camp Mujuk Corpsman to ensure the medication is on board the installation once you arrive.
- The medical staff aboard Camp Mujuk consists of a single Independent Duty Corpsman (IDC).

Security Forces

- Camp Mujuk technically does not have a Provost Marshall's Office (PMO); related functions are handled by the base Security Forces, or at Camp Walker in Daegu (~90-120 minutes away).
- The Security Forces section provides security and law enforcement for Camp Mujuk and is augmented by a civilian Korean security force (Korean Security Guards [KSG]).
- The main gate is closed from 0100-0500 weekdays/weekends and holidays for vehicle traffic. The pedestrian gate remains open 24 hours a day.
- Marines are required to carry their ID card and another form of picture identification until they are registered in Defense Biometric Identification System (DBIDS). After DBIDS registration, only a military ID card will be required for base access. It is heavily recommended personnel also carry their proof of vaccination cards.
- Zero Tolerance for harassment to the Korean Nationals working aboard Camp Mujuk.
- No one under the age of 21 may purchase, possess, consume, or be served alcoholic beverages.

Mess Hall

- ID cards are required. Meal purchases may be made with ID card or cash.
- Dining Hours: M-F 0630-0800, 1130-1300, 1700-1800
- Weekends & Holidays: 0930-1100, 1600-1730
- Dining Costs: U.S. dollars only (there is an ATM available next to Curfews)
 - Breakfast: \$ 4.30, Lunch: \$6.85, Dinner: \$5.95
 - Weekends: Brunch: \$7.65, Dinner: \$9.35
 - Holidays: \$11.20

Amenities Available Aboard Camp Mujuk

- Barber shop: **Open Friday – Sunday**, 0900-1600 (days/hours will change when visiting/training units are on deck)
- Mini PX – Accepts U.S. dollars, debit, and credit cards. Does not do cash back. The PX is small, but relatively well stocked.
- LG store (internet/cell phones)
- MCCS Library, which has books, movies, and computers.
- MCCS Recreation Center, which is also the location of Curfews, the on-base restaurant.
- MCCS Fitness Center with an indoor basketball court & racquetball court, weight room, cardio room, aerobic/martial arts room, HITT Center (separate building), and sauna in both male and female heads.
- Single Marine Program lounge with Wi-Fi, laptops, and gaming systems.

Helpful Hints

- Familiarize yourself with Korean culture and customs.
- Learn some common Korean phrases/words.
 - Pohang (pronounced po-hong) is the city that the base is located in.

- Search the City of Pohang, Korea so you can familiarize yourself with your duty location (weather, population, culture, entertainment, etc).
- Highly recommended, but not required, to have a U.S. passport. You will need one if you wish to take any leave and travel to other countries (opportunities are available). **SNCOs & Officers will need one should they have to travel to Okinawa for military business.**
- SNCOs & Officers should get an International Driver's License due to the possibility of going TAD to other countries during their tour of duty.
 - Make sure your civilian driver's license is up to date (for the duration of your time here in Korea). If it is not, you will not be able to obtain your Korean SOFA Driver's License. You will drive while you are out here, so this is a must.
- KTX is the Korea Train eXpress. It's the high speed train system that goes across all of South Korea (similar to America's Amtrak system, except better).
- At your earliest convenience, exchange US dollars for Korean WON. There is an ATM on base with WON and US dollar options. 100,000 KWON is ~\$87 depending on current exchange rates.
- Korean smartphones are available for purchase on base. \$60/month is the average cost with data and texting. You can also buy Wi-Fi for your room, ranging from \$20-\$60 a month depending on speed.
 - It is heavily recommended to get a cell phone with data service when you arrive; you can also purchase a Korean SIM card instead of buying a separate phone.
 - It is recommended to load WAZE to your smart phone. Google Maps and Apple Maps do not work in Korea. Naver Maps is a great app, but you have to find the language setting..... Since it is automatically in Hangul. KakaoT/Map is another alternative (similar to Naver).
- Due to a small exchange store, and not having many Marine uniform items, it is recommended to buy any Marine clothing or uniform items you may need (or think you will need) before PCS'ing. You will still be able to buy and ship them online or purchase basic uniform items from Camp Humphreys uniform store (which is roughly 4 ½ hours away). There is no other Marine Corps installation on the peninsula and other bases have little to no Marine Corps uniform items.
- Currently, there is not a curfew for Service Members stationed or TAD on the Korean Peninsula however, the front gate will be closed for vehicle traffic during designated times.

Helpful Phone Numbers

- Sergeant Major: cell 010-8685-4675 / DSN 315-763-6950
- Admin Chief: cell 010-8685-7394 / DSN 315-763-6878
- Operations Chief: cell 010-5643-1473 / DSN 315-763-6925
- BAS: cell 010-2820-2604 / DSN 315-763-6922

Dialing from the United States

- 011-82-54-240-XXXX (last four of the DSN extension)
- CDO Cell Phone: 011-82-10-2823-3743

Helpful Websites

<http://www.usfk.mil/>
<http://yongsan.korea.army.mil/> (Not Secure warning on gov't computer)
<http://daegu.korea.army.mil/> (Not Secure...)
<http://www.osan.af.mil/>
<http://www.dragonhilllodge.com/>
<https://www.facebook.com/CampMujukOfficial>

Consolidated Checklist

- ID card
- Original Orders, hard copy x3
- Medical & Dental records (Overseas Screening checklist mandatory)
- Passport (If you wish to take leave overseas)
- Prescriptions in original container (contact medical here for special needs)
- Training Certificates (prior to arrival)
 - o Cybersecurity (MarineNet)
 - o Information Assurance (MarineNet)
 - Submit SAAR Form(s) through sponsor prior to arrival
 - o USFK Theater Specific Required Training (JKO)
 - o VCAT Republic of Korea (JKO)
 - o USFK Driving (JKO)
 - o SERE (JKO)/Code of Conduct
 - o TRAX training (DTS 101, GTCC 101...)
- GTCC
- State-issued driver's license (will not expire while at Camp Mujuk)
- Itinerary/travel documents (to include receipts)
- Documents from former command (checkout sheet, lost gear statement(s), award(s), custody agreement(s), etc.)
- Alphas
- Dress Blues w/ medals (Marine Corps Ball will occur)
- SAAR for access to required systems 30 days prior to arrival

Recommended Packing List

- Basic linens
 - o SNCOs/Officers – full size bed
 - o E-5 and below – twin size bed
 - o Your bed will come with a set of sheets, comforter, and pillow (if you prefer your own linens, it is recommended you bring only a single set)
- Basic toiletries
- Minimum kitchen
 - o Oven and stove top power is very limited
 - o Small/medium pot
 - o Fry pan
 - o Minimum basic utensils
 - o Electric kettle (heavily recommended)
 - o Electric griddle (heavily recommended)
 - o Instant Pot
 - o Minimal dinnerware
- Basic wardrobe
 - o South Korea does enjoy seasons (H: 90-105; L: 10-20???)
 - o Weather ranges from ice and snow to extreme heat and humidity, high winds and pouring rain. There is a typhoon season and a rainy season.
 - o Do bring a Suit/formal business attire. We do lots of Mil to Mil and Mil to Civ engagement here. Imagine that this is kind of like being on I&I duty. We are the face of the Marine Corps in Pohang, South Korea. It is important to look the part.

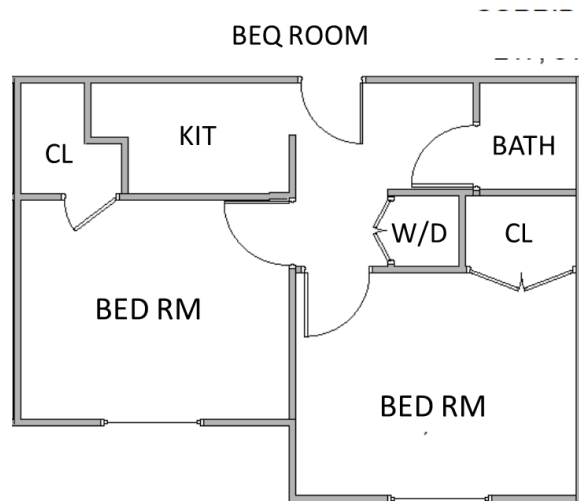
- Full seabag issue of uniforms
 - o Bring dress uniforms and sword (Birthday Ball is celebrated)
 - o Will need garrison covers
- Television (less than 50")
- Pedal bike (not necessary, but may be a nice to have); rentals are available via MCCA.

Keep in mind...

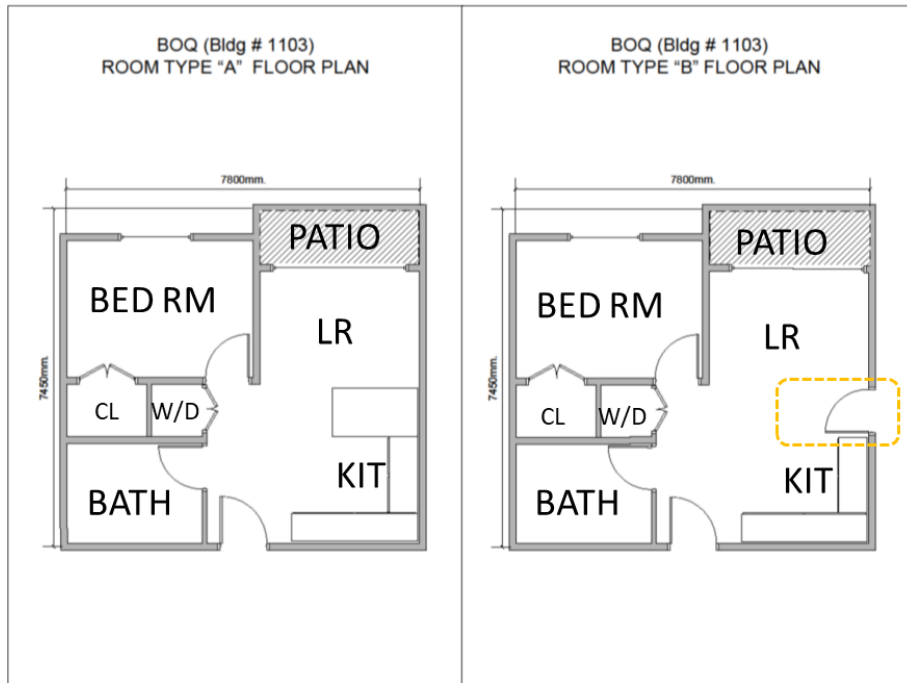
- Personnel rate 600# HHG (classified as Unaccompanied Baggage)
- E-6s/Officers do *NOT* rate POV storage; USFK policy requires SNCOs and Officers to ship their vehicle (prepare accordingly)
 - o If you desire to store your vehicle and you are E-6 or above, you will have to pay out of pocket.
 - o You can purchase SOFA-registered vehicles on the cheap (~\$1-2K, sometimes even less)
- There are plenty of cheap weekend activities around here, public transportation is inexpensive, and so there is very little need for POVs. The bus, taxi, and train (public transportation) system makes life easy here.
- There are several NTVs for official business, but not really to be used for personal errands out in town. Marines are allowed to use them to make runs to the Daegu commissary and exchange on the weekends, and even PME trips, etc (Backed by the Camp Muek NTV Policy).
 - o USAG Daegu is located approximately 2 hours away from here. They have several installations there that have more robust services than are what's available on Camp Muek. The "go to" is Camp Walker, which is purported to have the better Commissary, PX, 7 Day Store, and haircut place within the AO. Our Civilian employee's with children will typically live IVO Daegu so their kids can attend DOD Schools.
- All furniture is provided, and typically includes:
 - o Bed
 - o Desk w/ office chair
 - o Tall chest of drawers (lg. dresser; 5 drawers)
 - o Wardrobe
 - o Nightstand (sometimes x2) w/ reading lamp
 - o Couch
 - o End table (sometimes x2)
 - o Chair/recliner (in select units)
 - o Tall lamp
 - o Coffee table
 - o Small chest of drawers (sm. dresser; 3 drawers)
 - o Area rug (in select units)

NO NEED for:

- Basic cleaning supplies/gear
 - o Pohang has stores in which all cleaning supplies can be purchased; has brand-name products you're used to in the States
 - o There is a utility closet with vacuums, mop buckets, and general cleaning equipment available
- Gourmet kitchen/cooking equipment
 - o While provided with a small kitchenette, the capability of the stove/oven is limited
- Router (US-manufactured products do not work in Korea)



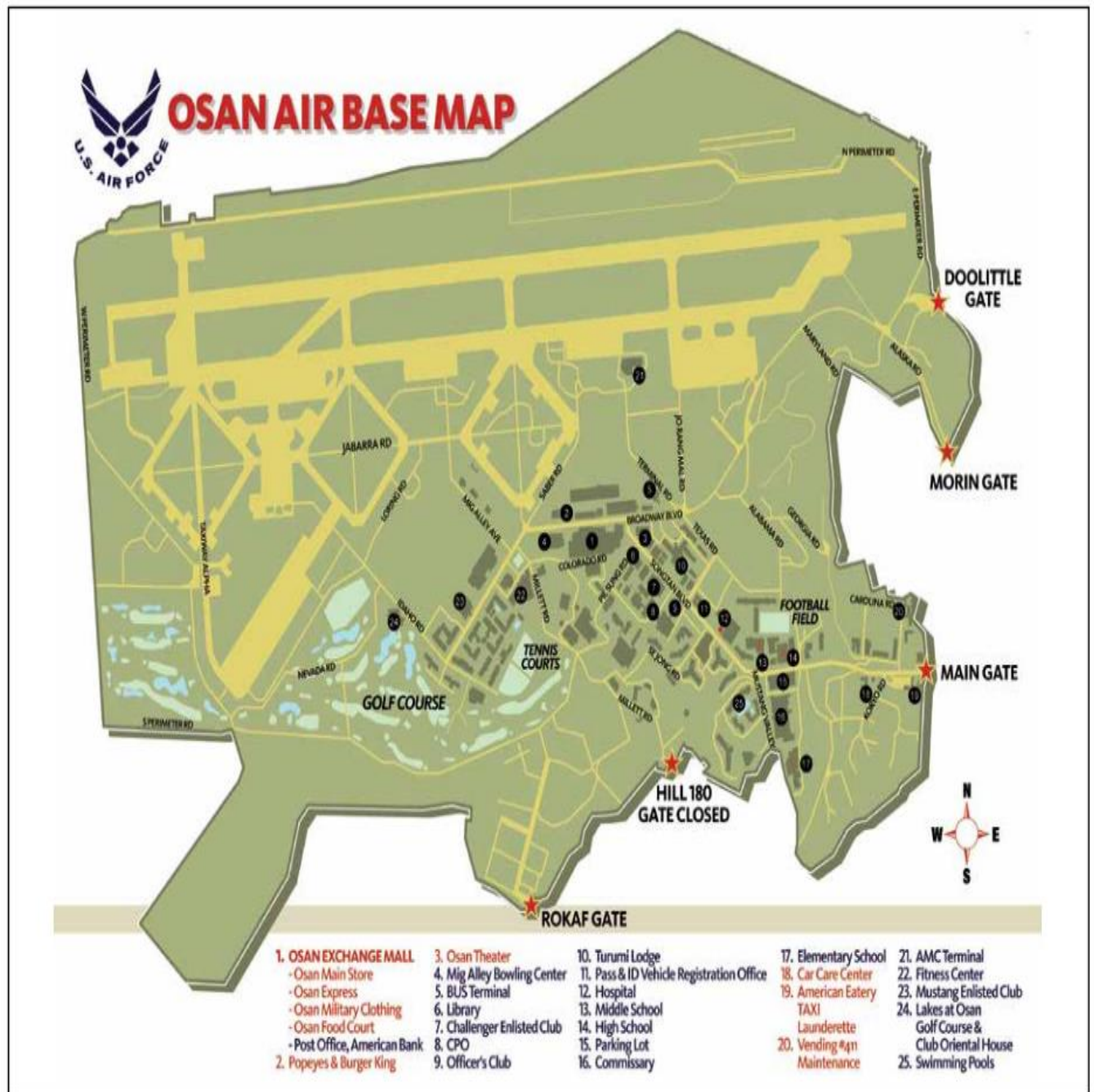
Bedrooms no longer have carpet.



Some rooms on the first floor are connected. Such rooms do not have the "bar" separating the kitchenette from the living room area.



OSAN AIR BASE MAP



MAP OF CAMP HUMPHREYS



MAP OF CAMP HENRY

CAMP HENRY VISITOR MAP



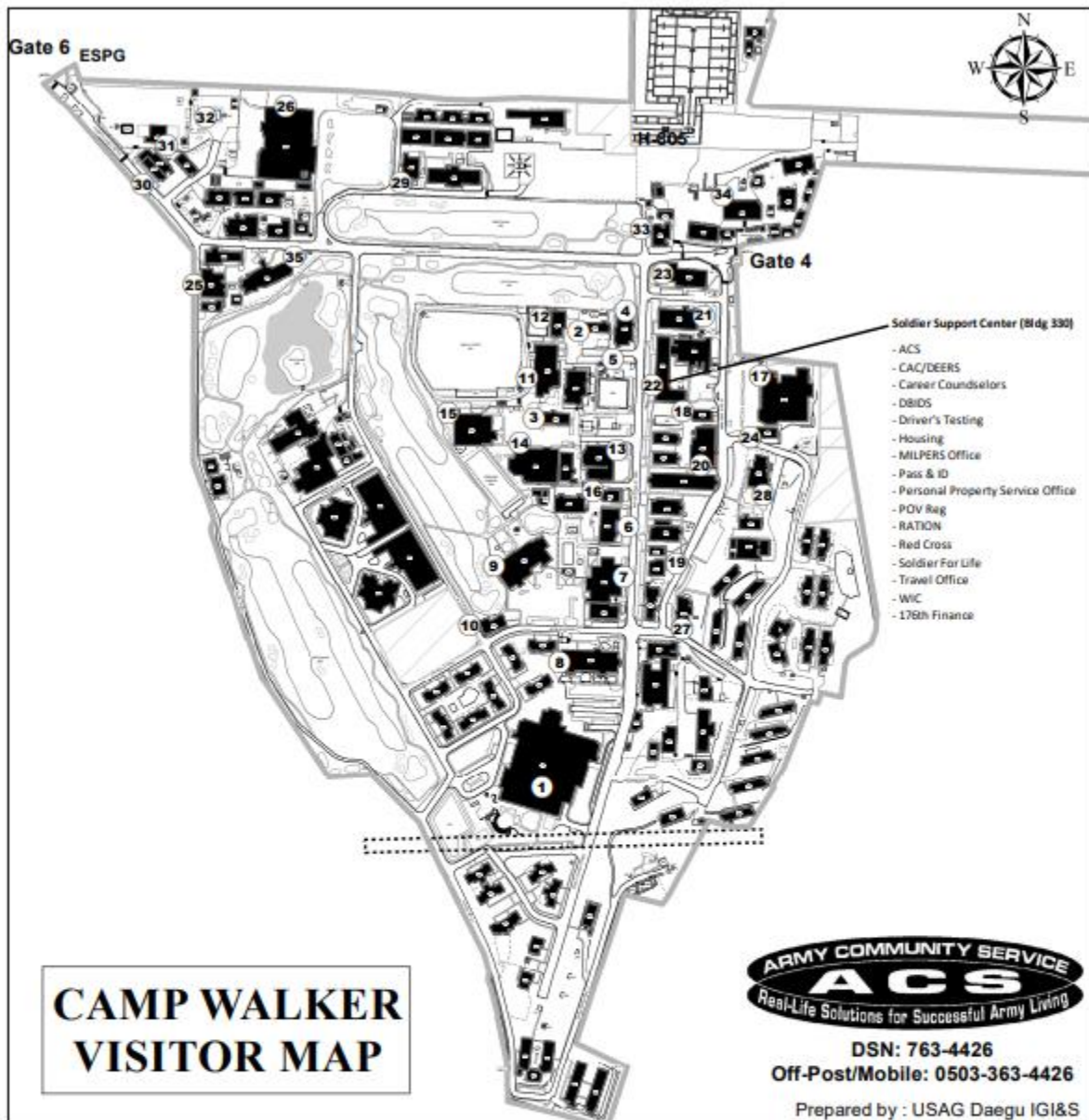
DSN: 763-4426
Off-Post/Mobile: 0503-363-4426



Prepared by: USAG Daegu IGI&S

| # | BLDG | NAME | # | BLDG | NAME | # | BLDG | NAME |
|----|------|--------------------------------------|----|------|--|----|------|---|
| 1 | 1115 | DMWR | 12 | 1410 | DoD Community Bank | 23 | 1685 | 176th Finance (1F) / HQ, 403rd AFSB (2F) |
| 2 | 1121 | Fit To Win Center | 13 | 1415 | Vehicle Processing Center | 24 | 1669 | KATUSA SnackBar |
| 3 | 1131 | 76th CID Det / Digital Training Fac. | 14 | 1420 | Fire Station #2 | 25 | 1703 | 32nd KSC Bn. |
| 4 | 1208 | HR Training Ctr / Driver Testing Ctr | 15 | 1501 | 19th ESC HQ | 26 | 1705 | Area IV SHARP |
| 5 | 1211 | USAG Daegu Garrison HQ | 16 | 1535 | TMP Dispatch | 27 | 1712 | Army Substance Abuse and Prevention |
| 6 | 1217 | VISC | 17 | 1610 | Dining Facility | 28 | 1715 | 524th MI DET |
| 7 | 1220 | Navy Federal CU / Lotte Cafe / FGTO | 18 | 1621 | CPAC / 665th MCT, 25th Trans. Bn. | 29 | 1805 | JAG / TDS / TAX Center / Legal Assistance |
| 8 | 1225 | Shoppette / Barber Shop / Food Court | 19 | 1639 | DPW | 30 | 1814 | S.J.A (Legal Office) |
| 9 | 1241 | States Club | 20 | 1650 | 19th ESC SPO | 31 | 1815 | CSB (Contracting Support BD) |
| 10 | 1253 | Army Corps of Engineers (FED) | 21 | 1652 | Installation Property Book Office (2F) | 32 | 1835 | Theater |
| 11 | 1311 | Marine Logistics Det / ROK Army | 22 | 1671 | TADDs Training Ctr, Range Control | 33 | 1840 | Education Center |

MAP OF CAMP WALKER



| # | BLDG NAME |
|----|---|
| 1 | 170 Daegu American Middle/High School |
| 2 | 200 Exchange Auto Service(AAFES) |
| 3 | 208 AAFES Mini Mall |
| 4 | 215 Daegu Mountain Inn Dining Facility |
| 5 | 217 Gas Station (AAFES-K) |
| 6 | 220 Bodine Dental Clinic |
| 7 | 221 Health Clinic |
| 8 | 223 Child Development Center/Parent Central |
| 9 | 230 Evergreen Golf Club |
| 10 | 240 Apple Tree Gift & Thrift Shop |
| 11 | 252 Youth Center |
| 12 | 257 School Age Services Entrance |

| # | BLDG NAME |
|----|---|
| 13 | 260 Soldier Memorial Chapel |
| 14 | 261 Fitness Center |
| 15 | 265 Aquatics Center |
| 16 | 267 Soldier Memorial Chapel Annex |
| 17 | 310 Exchange Main Store(AAFES) |
| 18 | 312 KATUSA Snack Bar |
| 19 | 314 Shoppette(AAFES) |
| 20 | 318 USO / HOME AND GARDEN / Laundrette |
| 21 | 320 Bowling Center |
| 22 | 330 Soldier Support Center |
| 23 | 335 Community Activity Center / Library |
| 24 | 340 Starbucks |

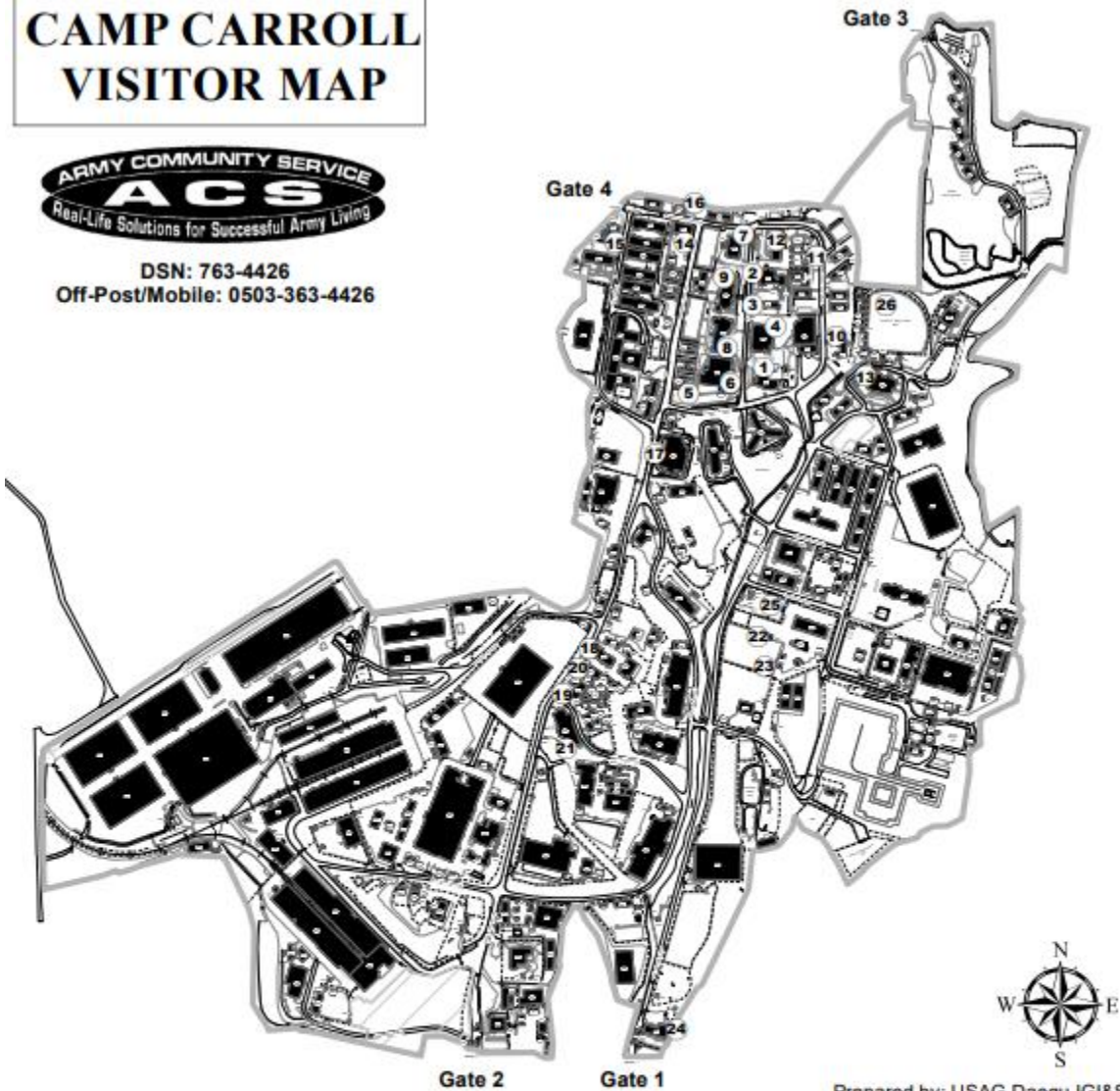
| # | BLDG NAME |
|----|--|
| 25 | 341 Veterinary Clinic |
| 26 | 357 Commissary |
| 27 | 370 Burger King |
| 28 | 376 Hilltop Club |
| 29 | 409 Post Office / Mailroom |
| 30 | 410 Provost Marshall Office (188th MP) |
| 31 | 416 Directorate of Emergency Services |
| 32 | 441 FUEL / POL (GOV) |
| 33 | 452 Fire Department |
| 34 | 466 Self help Store / HAZMART |
| 35 | 701 Army Lodge |

MAP OF CAMP CARROLL

CAMP CARROLL VISITOR MAP



DSN: 763-4426
Off-Post/Mobile: 0503-363-4426



Prepared by: USAG Daegu IGI&S

| # | BLDG FACILITY | # | BLDG FACILITY | # | BLDG FACILITY |
|---|---|----|---|----|----------------------------|
| 1 | 100 Army Lodge | 10 | 154 Chapel | 19 | 323 Fire Station |
| 2 | 111 PX | 11 | 162 Swimming Pool | 20 | 340 Self Help Store |
| 3 | 113 Mini Mall / Military Clothing / Dry Clean | 12 | 170 Multi Purpose Training Center / Theater | 21 | 502 Central Issue Facility |
| 4 | 117 Food Court / Hideaway Club | 13 | 180 Medical / Dental Clinic | 22 | 918 TMP Dispatch Office |
| 5 | 127 Housing Office | 14 | 203 Post Office / NFCU / Ticket (Air & Train) | 23 | 934 Driver License Office |
| 6 | 135 Fitness Center | 15 | 236 Education Center | 24 | 946 PMO / Pass & ID Sec |
| 7 | 136 Commissary | 16 | 267 Criminal Investigation Division | | DBIDS / Ration |
| 8 | 138 Bowling Center / Cactus Jack | 17 | 303 Dining Facility | 25 | 961 Gas Station |
| 9 | 139 Community Activity Center / Library | 18 | 320 DPW | 26 | 980 Luther H. Story Field |